



LOCATION MAP



PLAN - GROUND FLOOR



SITE SURROUNDINGS



VIEWS OF THE RESORT

SITE INFORMATION

LOCATION : Hesaraghatta, Bangalore

ARCHITECT : Martin Lafferiére, Chitra Vishwanath

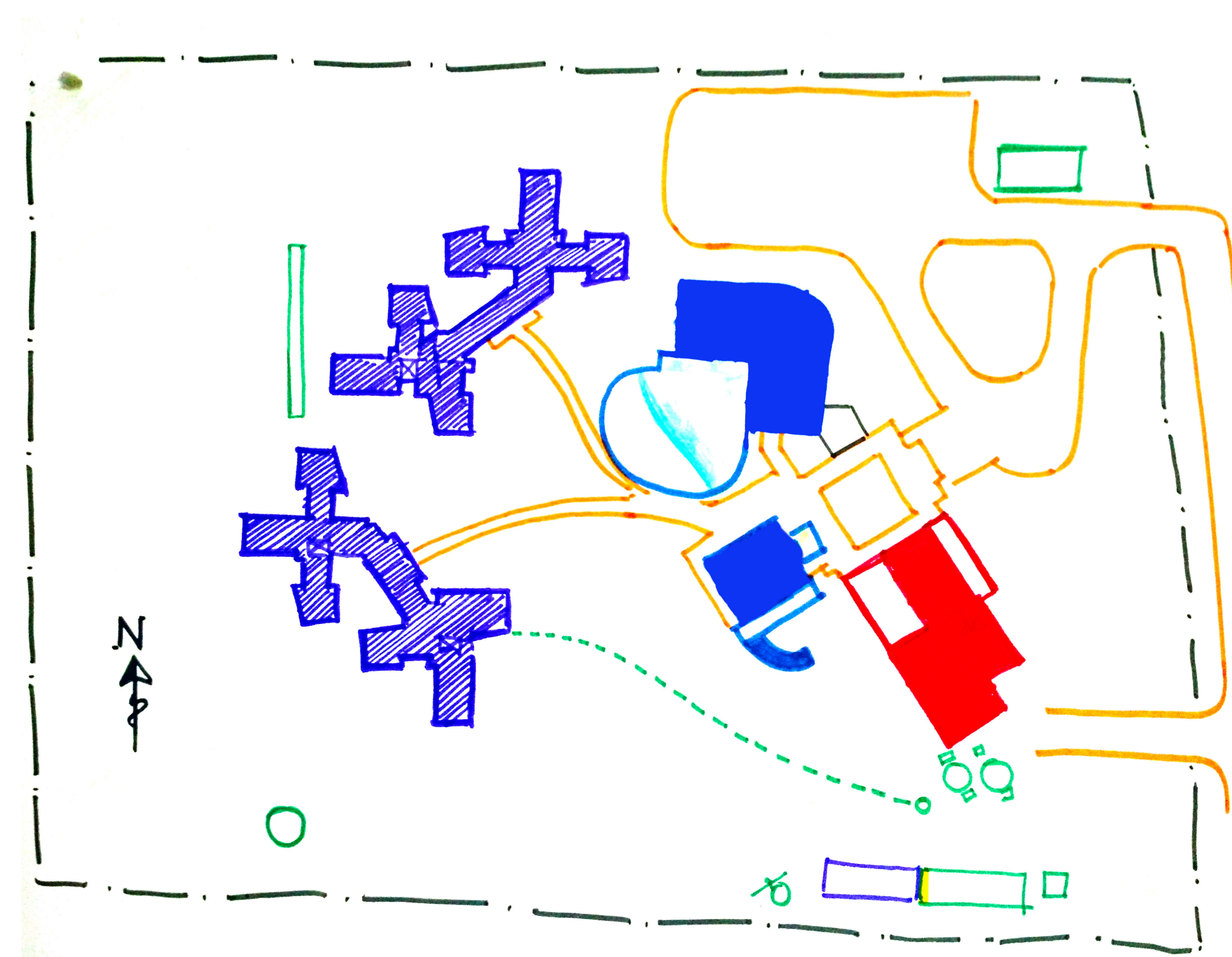
SITE AREA : 12 acres

COMPLETED : 2006

PROJECT COST : Rs 6,00,00,000

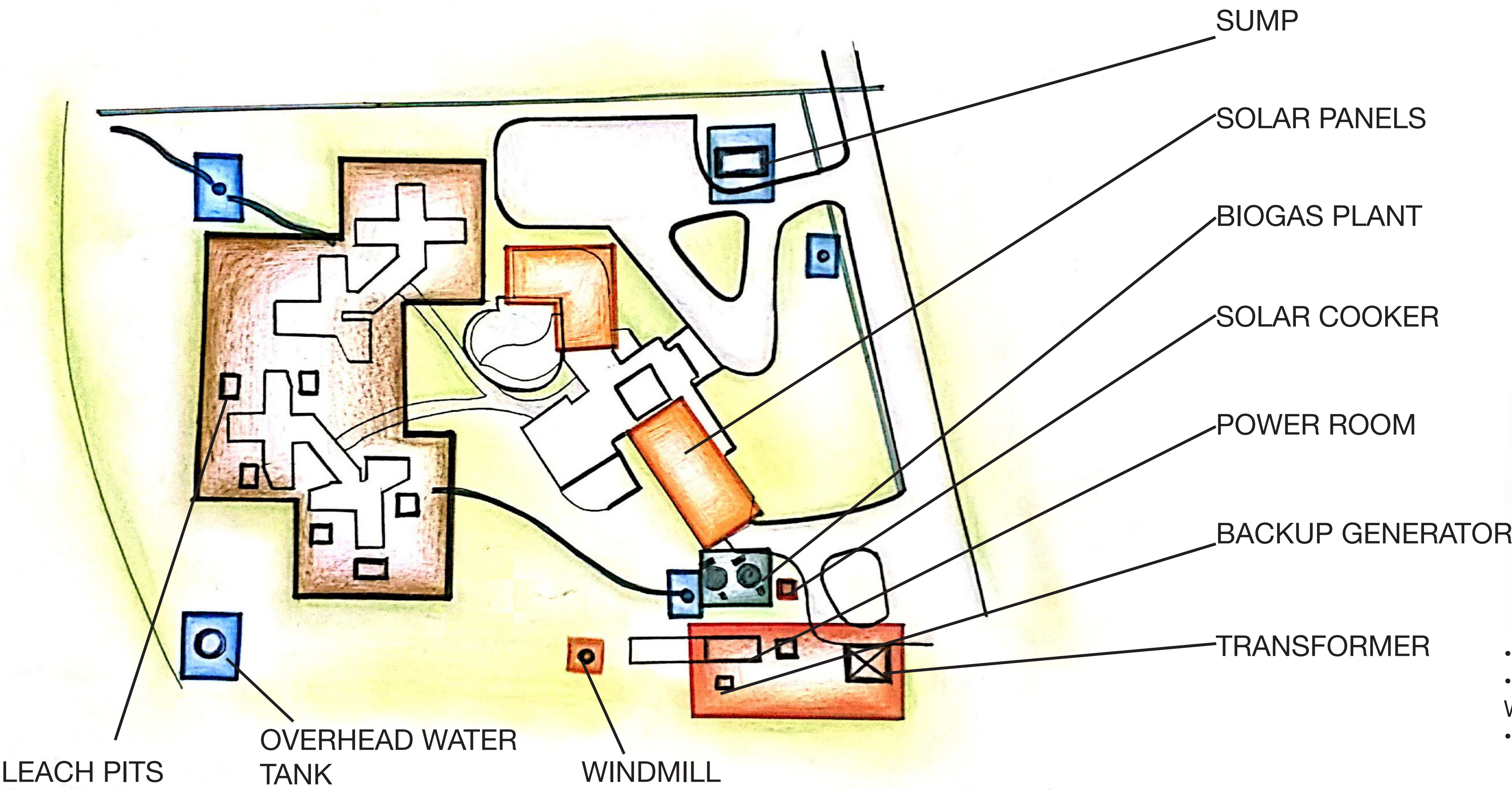
ACCESSIBILITY : Road

FEATURES : 24 dwelling units, Restaurant, Spa, Pool, Traditional Village Activities, Dances, Games, etc.

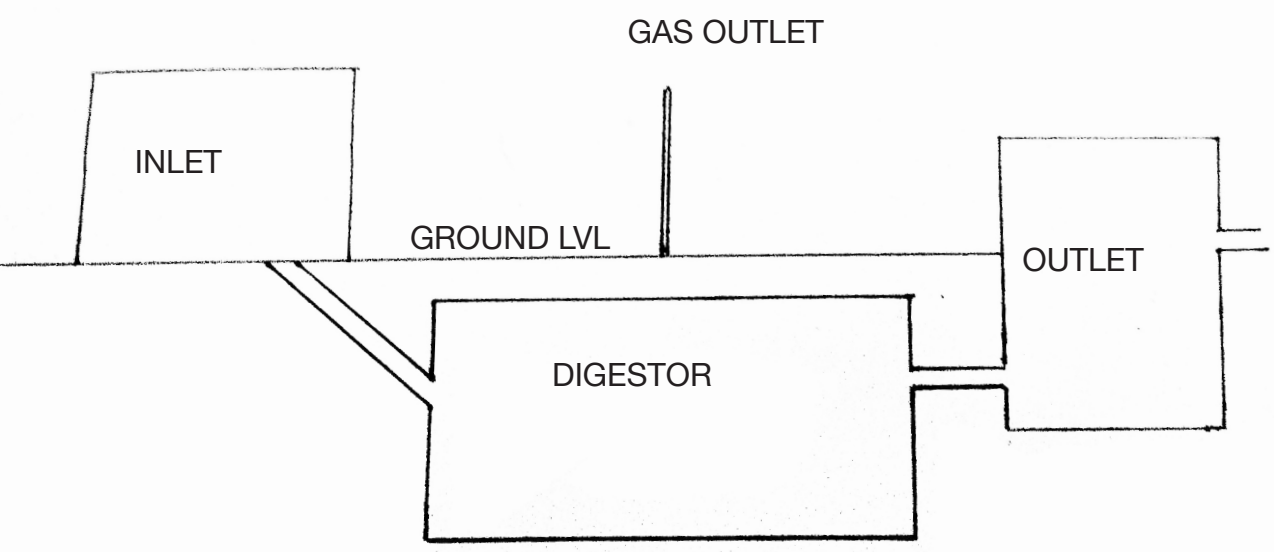
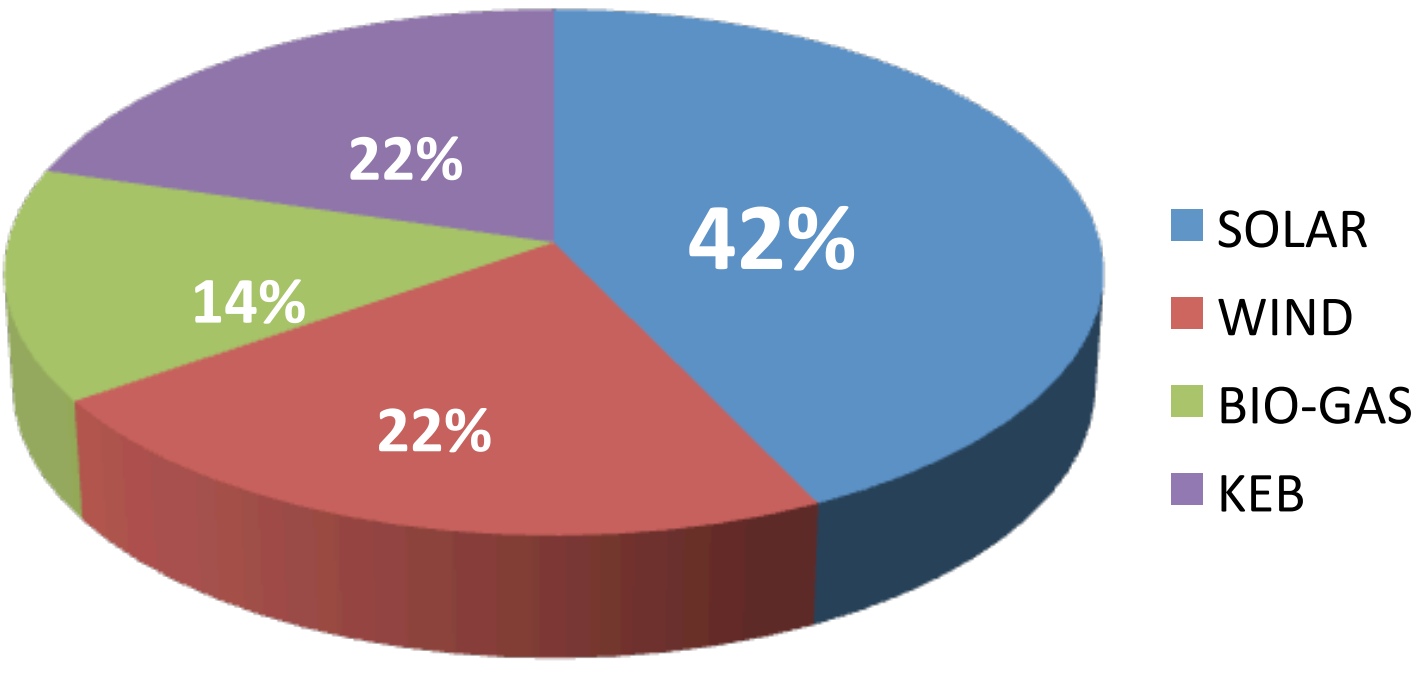


	RESTAURANT
	RECREATION
	SERVICES
	LODGING
	CIRCULATION
	ADMIN

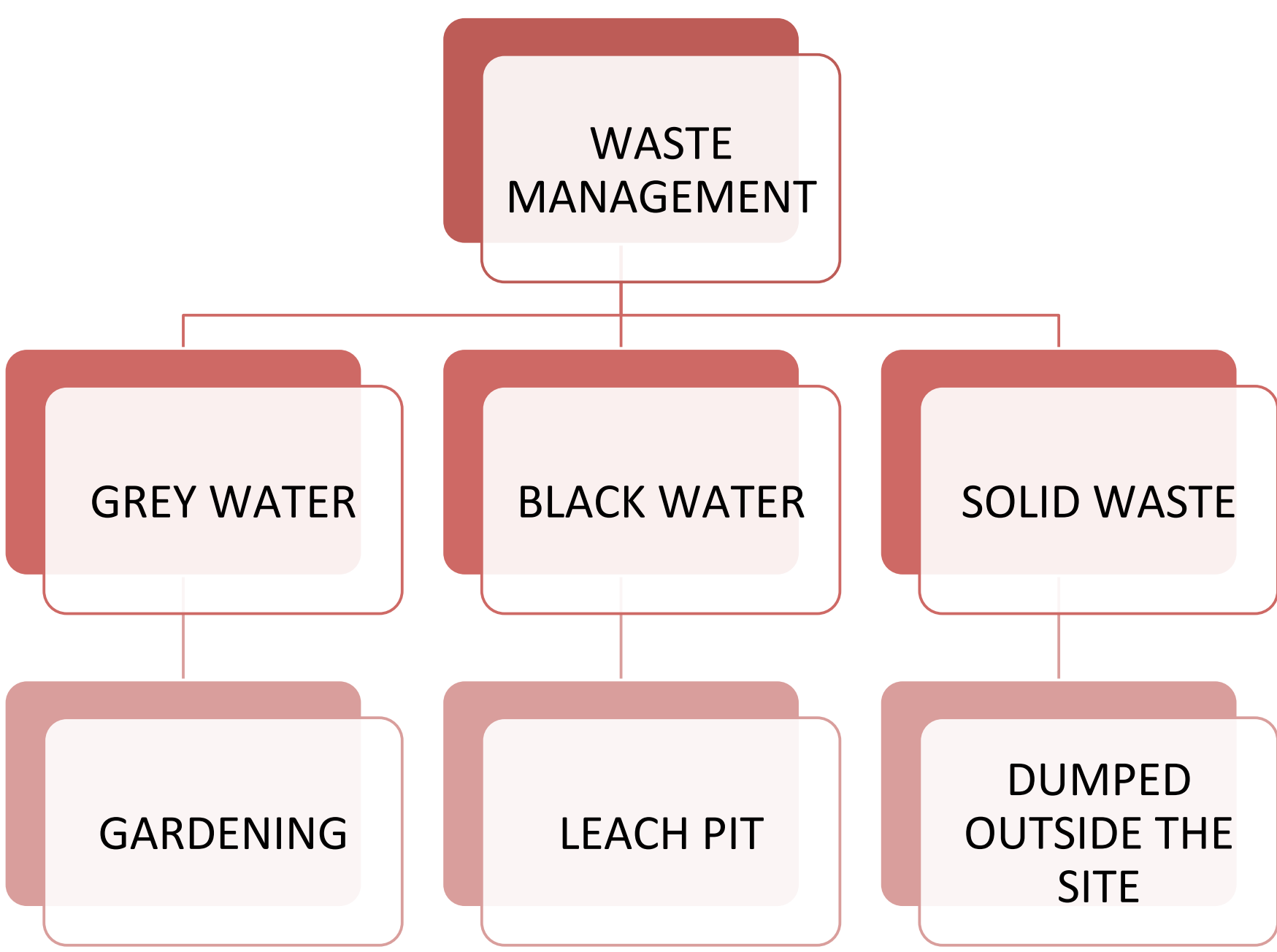
SERVICES



ENERGYMANAGEMENT



- DIGESTOR PLACED 10ft BELOW GL
- RAW MATERIALS - COW DUNG, KITCHEN WASTE
- BIOGAS USED LARGELY BY KITCHEN



WHEN THE ENERGY SYSTEMS USED BY THE RESORT FAIL OR MALFUNCTION, THE BACKUP GENERATOR PROVIDES POWER FOR THE RESORT'S FUNCTIONING. HOWEVER, THIS IS LARGELY REDUNDANT, AS THE RESORT RELIES PRIMARILY ON SOLAR POWER WHICH, ON STORAGE, IS RELIABLE ENOUGH TO POWER THE RESORT FOR NIGHT TIME AND ON CLOUDY DAYS.

- SOLAR COOKER USED FOR THE RESIDENT KITCHEN,
- SOLAR PANELS PROVIDE 6.4KW OF POWER,
- THE WINDMILL PROVIDES 3.3KW OF POWER,
- OVERHEAD TANK CAPACITY - 84,000L,
- NO ENERGY CONSUMED IN PUMPING TO ROOMS,
- NO AIR CONDITIONING USED IN THE RESORT.

